

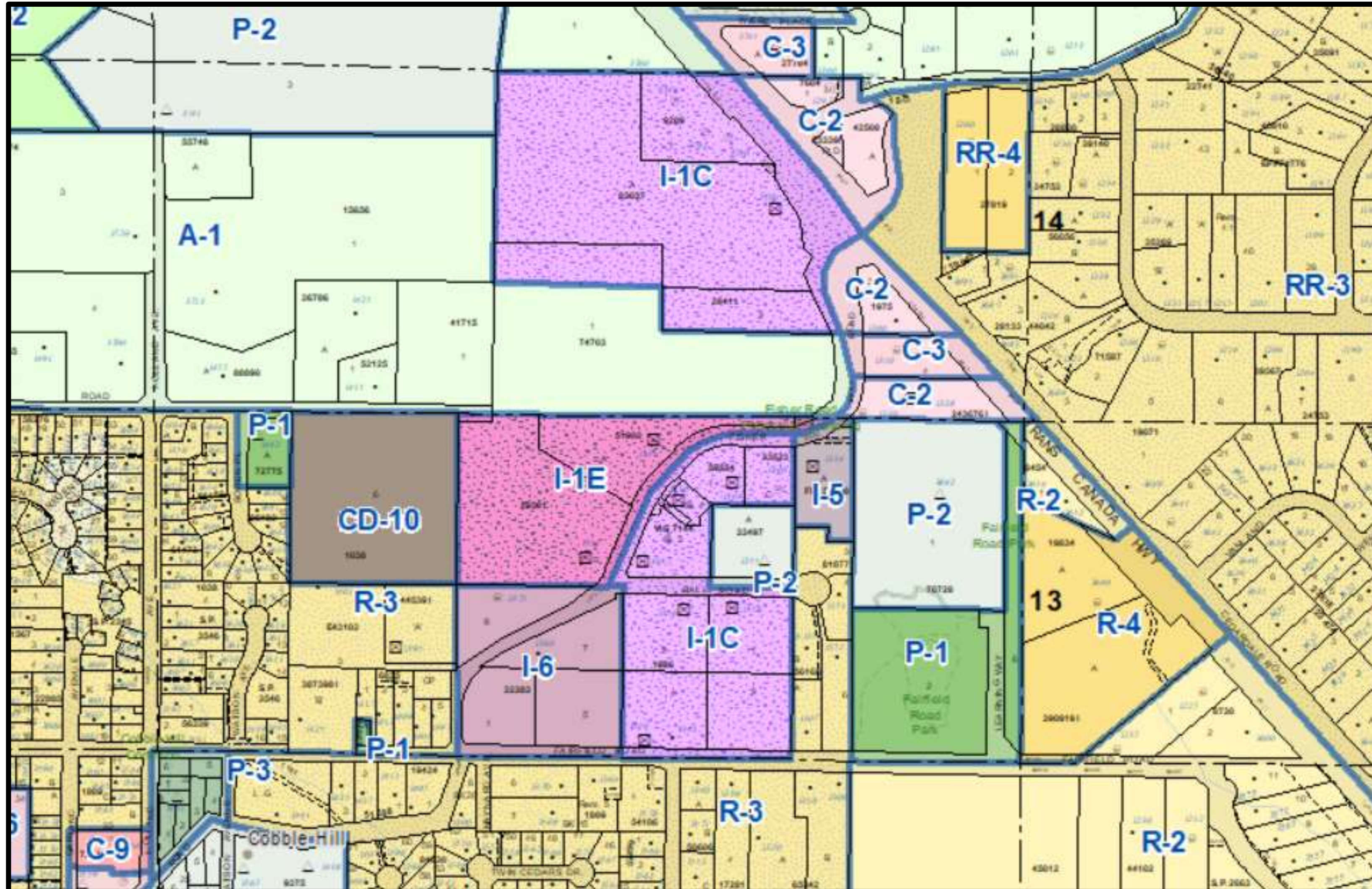


CVRD

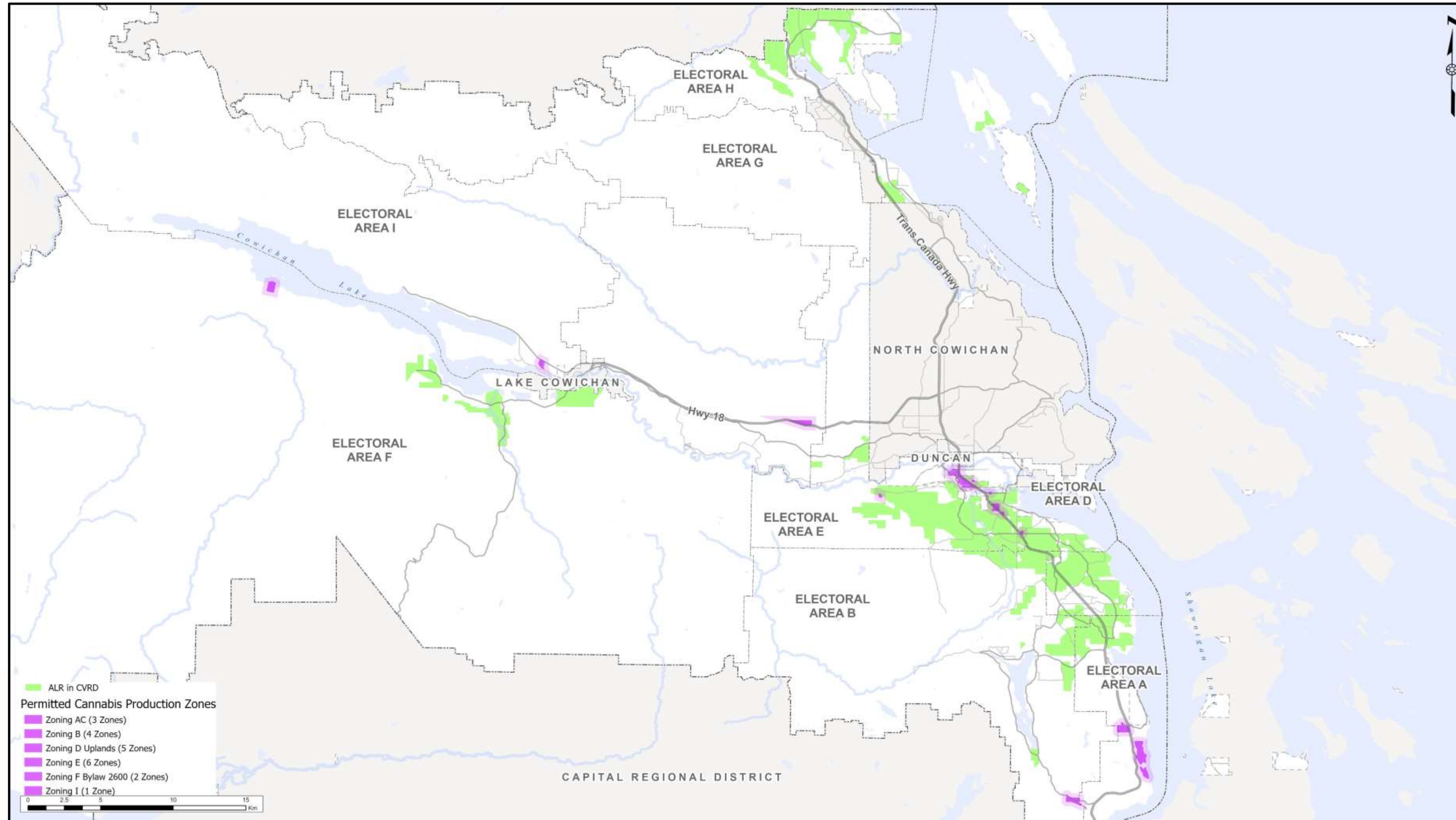
CVRD Cannabis Regulations

Lauren Wright, MCIP, RPP
Planner II

What is Zoning?

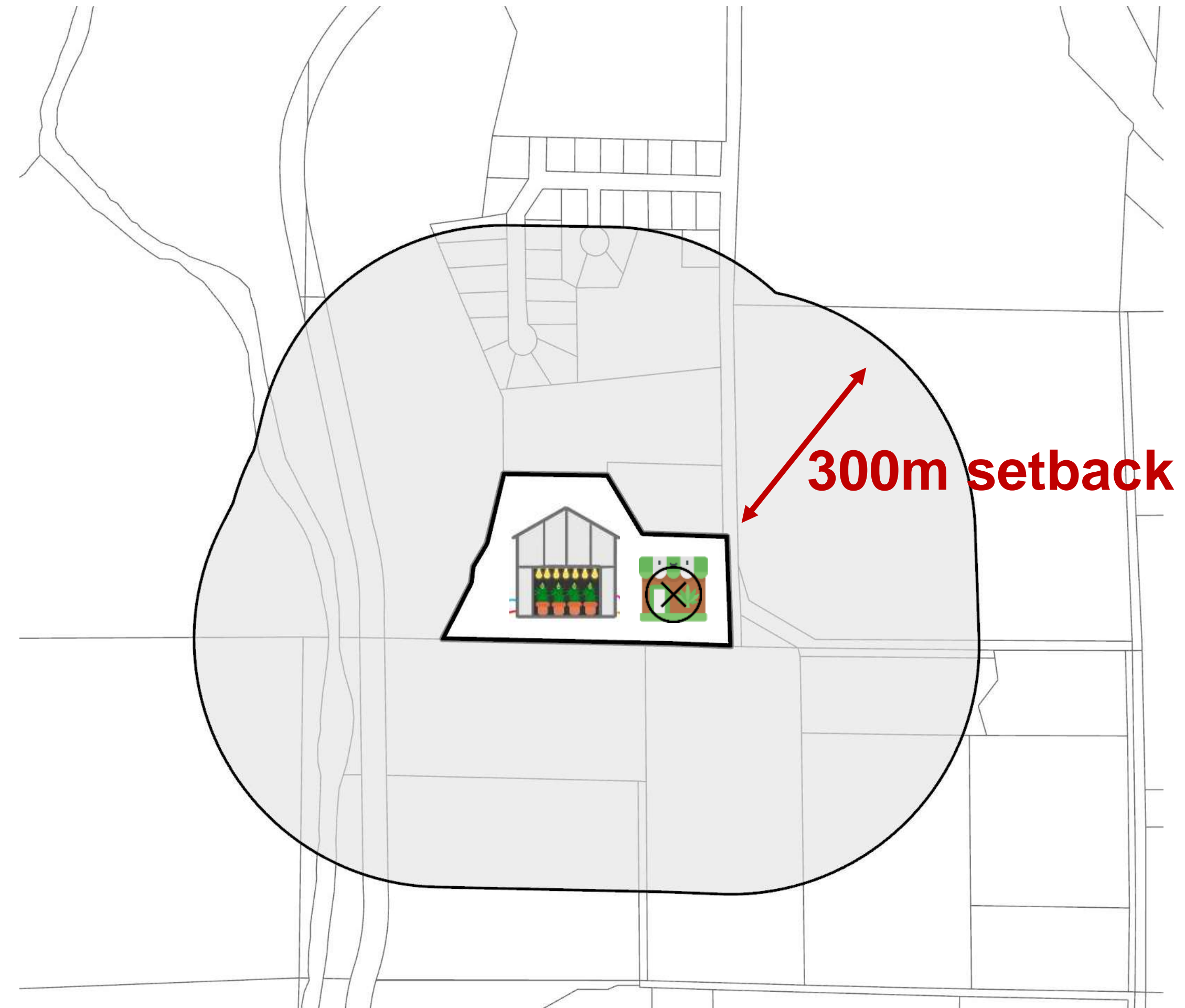


Cannabis Production Facility Policy: Permitted Areas



Cannabis Production Facility Policy: Location

- 1 per lot
- Not on lot with cannabis retail store
- Areas designated or zoned residential not considered
- At least 300m from:
 - School; playground / park; sports field; licensed daycare; community center; area frequented by children/youth
 - Residential / rural residential zone
 - Institutional / water zone
 - Comprehensive / mixed use zone



Cannabis Production Facility Policy: Procedure

1. Pre-Application Meeting

2. Apply to Health Canada

3. Submit Complete Application

4. Rezoning Process

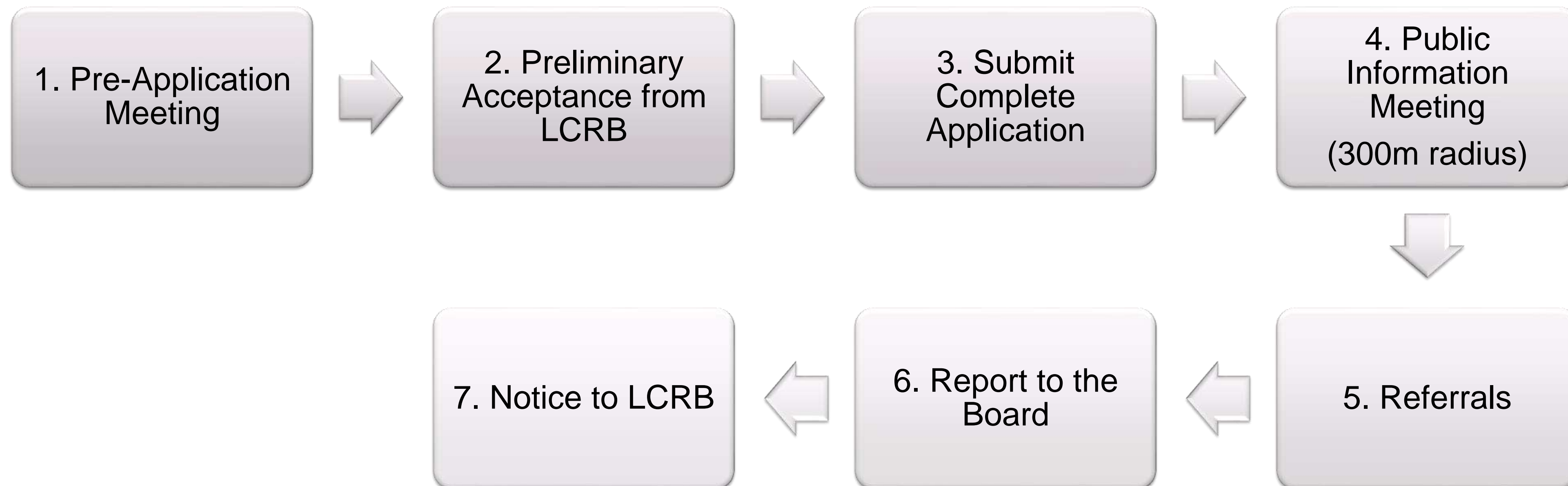
Cannabis Retail Stores: Permitted Areas

Electoral Area	Retail as Principal Use Zones Proposed Cannabis Retail		Cannabis Retail Already Permitted
Area A & C (Mill Bay/Malahat & Cobble Hill)	C-1 C-2	C-5 C-6	I-1A I-1B
Area B (Shawnigan Lake)	C-1 C-2B	C-2C C-2	I-1A I-1C I-5
Area D (Cowichan Bay – Uplands)	C2 C-2A C3 C4 C5	C6 C7 MU1 MU2 MU3	A7
Area E (Cowichan Station/Sahtlam/Glenora)	C-2 C-5		I-1* I-1A
Area F (Cowichan Lake South/Skutz Falls)	CD-1 C-1	C-2 C-5	I-1
Area G (Saltair/Gulf Islands)	C-2A C-2		
Area H (North Oyster/Diamond)	C-2 C2A C-2B		
Area I (Youbou/Meade Creek)	VC-1		I-1

Cannabis Retail Store Policy: Location

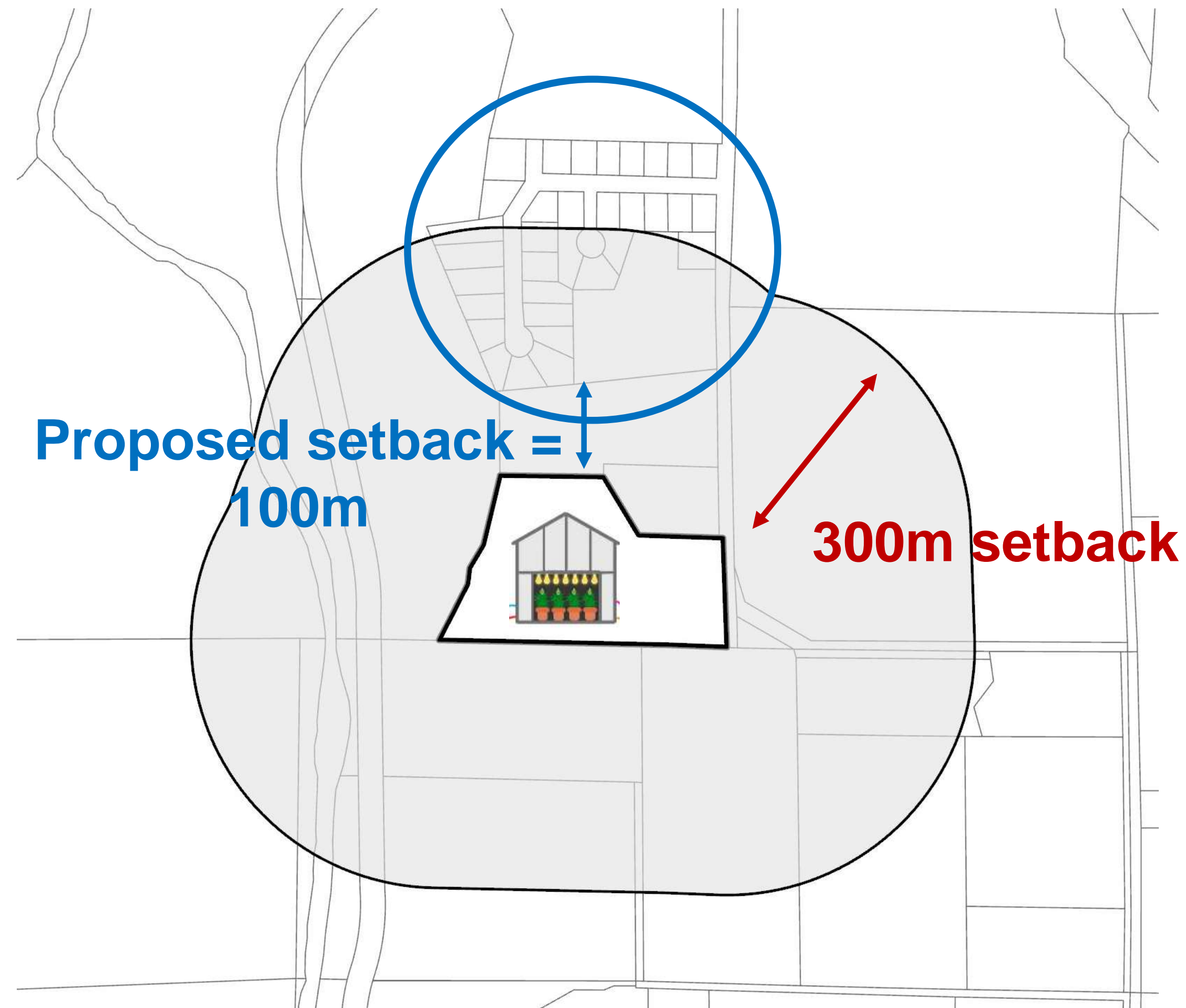
- 1 per lot
- Not in residential buildings or residential properties
- 300m from schools, parks, institutional or water zone, daycare, sports field, community center, areas frequented by children/youth
- 300m from another cannabis retail store (whether active or not)
- Building and siting considerations

Cannabis Retail Store Policy: Procedure



Is a Variance Required?

Applies to both
Production and Retail
applications



Thank You

Lauren Wright

250-746-2588

lauren.wright@cvrld.bc.ca